



WESTERNPORT
WATER.

Purple Pulse

Winter 2015

This issue:

Phillip Island Recycled Water Scheme
Recycled water on your property
Phillip Island Community Orchard



Recycled water news

Purple Pulse is a newsletter aimed to keep recycled water users informed. Feature articles and handy hints for using recycled water will help keep your finger on the pulse and your gardens will benefit too.

To register your interest in a topic about recycled water please, email

westport@westernportwater.com.au

It's that time again for your annual recycled water plumbing check!

Once a year we recommend you check your water supplies to ensure that recycled water remains connected to the recycled water network.

Initially an inspection was carried out to ensure that your connection was correct. However, an annual inspection is a must particularly if you've conducted plumbing, landscaping or renovation work.

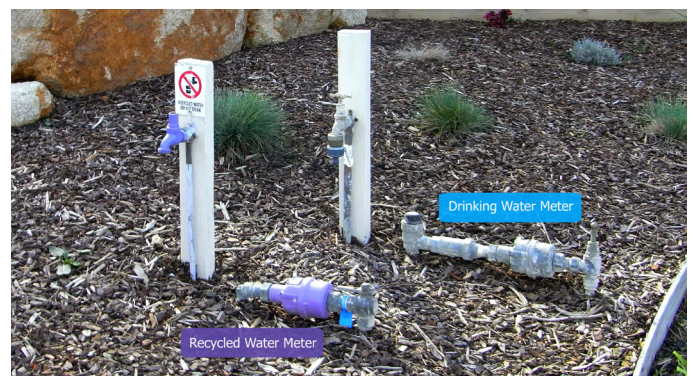
It's easy to do:

1. Turn off the valve on your drinking water meter outside your house. Keep the purple recycled water meter on.
2. Turn on all drinking water taps (i.e kitchen sink, shower) both hot and cold one by one. All taps should run dry after a short time.
3. After the taps have run dry, flush all toilets. They should refill as normal. Turn on all outdoor taps. All outdoor drinking water taps should run dry while the purple recycle water taps should continue to run. If this is not the case it could indicate a cross connection, which is where the two water supplies are connected to the wrong network.

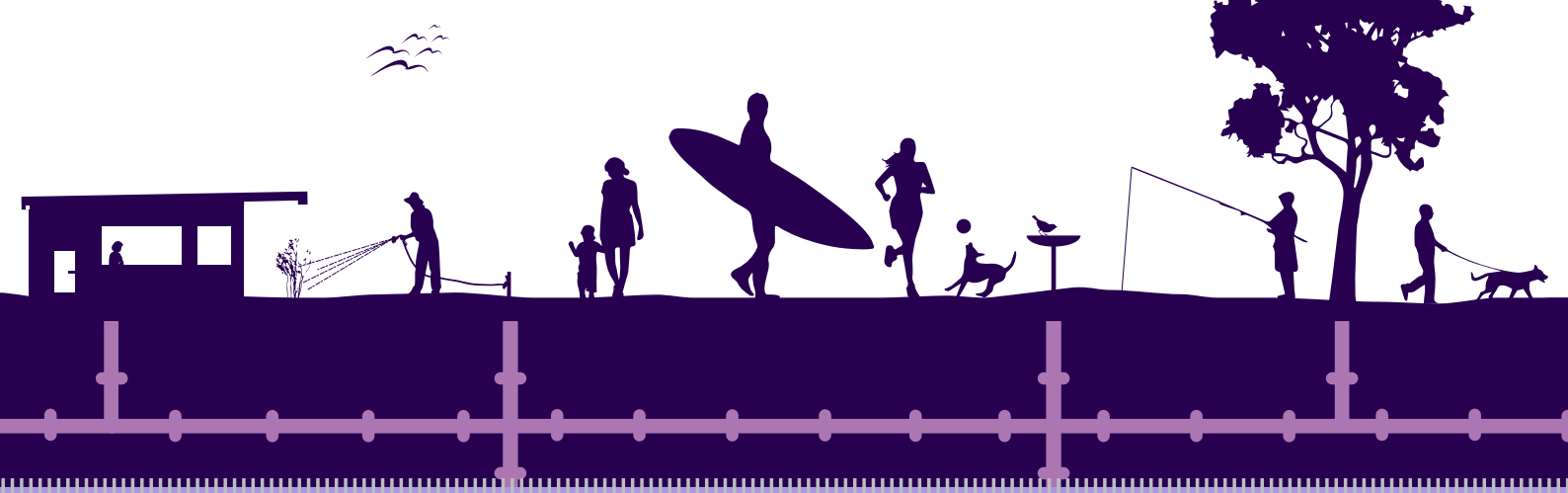
Note: when you turn your drinking water meter back, ensure all drinking water taps are turned off and then turned on slowly to allow trapped air to escape.

If you prefer, you can arrange for Westernport Water to carry out a complimentary plumbing check for you. Simply contact Westernport Water customer service team on 1300 720 711.

If you suspect a cross connection has occurred, please contact your local plumber and Westernport Water immediately. This is imperative to ensure the safety of your family and the wider community.



www.westernportwater.com.au



About the Phillip Island Recycled Water Scheme

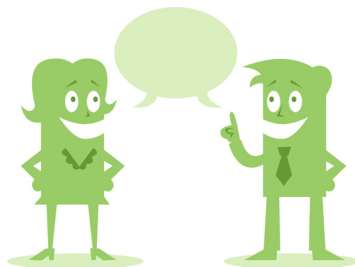
The Phillip Island Recycled Water Scheme has been delivering Class A recycled water to residents and commercial customers since August 2012. The scheme aims to reduce the use of valuable drinking water. Recycled water will be used for such things as flushing toilets, watering gardens, water features, washing cars and fire fighting. Recycled water is also used for commercial applications such as irrigating sports facilities, parks, gardens and a range of agricultural applications.

New estates in the Cowes and Ventnor areas have been the first residents to connect to the recycled water network and have made a significant contribution toward a more sustainable future on Phillip Island.

Recycled water on your property

Have you notified others?

You are responsible for notifying members of your household, tenants and visitors to your property, that it is supplied with recycled water. Everyone should be aware that recycled water is not suitable for drinking, cooking, bathing, showering or swimming. Recycled water is ideal for garden watering, washing your cars, boats and toilet flushing.



The Phillip Island Community Orchard located at Wimbledon Heights is showing great progress! The site demonstrates how recycled water can be safely used to grow local, organic, heirloom and common fruit and vegetables that can be harvested year round to increase local food production. The project promotes healthy living through active involvement in gardening, eating nutritious fruit and vegetables and promotes sustainable practices.

Fading signs

Please ensure that your outdoor recycled water "Do Not Drink Sign" is clearly visible. If your sign has faded we can help! Westernport Water has a limited number of free replacement signs that can be collected from our Newhaven office, or you can purchase one from your plumbing supplier.



Free recycled water purple hose pack?

Recycled water pipes and fittings will look very similar to your normal plumbing fittings but they are purple. If you have recently moved into your new home or still haven't collected your free purple hose pack, please drop into our Newhaven Office and pick one up.



For more information find us on Facebook www.facebook.com/islandorchard

